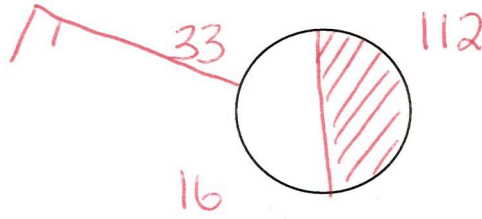


Draw a station model using the following information. Remember, to write the pressure, remove the decimal point & use only the last three digits. For example, 1012.5mb becomes 10125 then just 125.

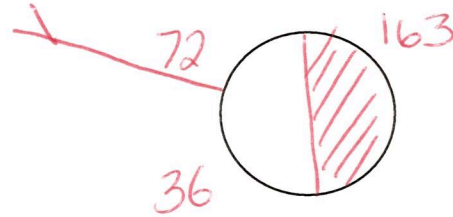
Right Now for Sterling, VA

- Temperature: 33°F
- Dew Point: 16°F
- Wind Direction: from WNW at 15mph
- Cloud Cover: 50% (or partly cloudy)
- Pressure: 1011.2mb
- Current Weather: none



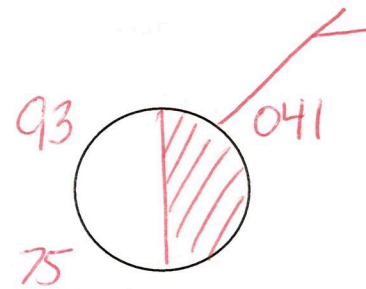
Right Now for San Diego, CA

- Temperature: 72°F
- Dew Point: 36°F
- Wind Direction: from WNW at 5mph
- Cloud Cover: 50% (or partly cloudy)
- Pressure: 1016.3mb
- Current Weather: none



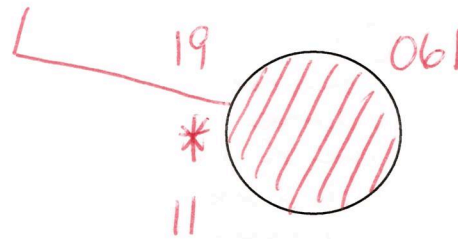
Right Now for San Jose, Argentina

- Temperature: 93°F
- Dew Point: 75°F
- Wind Direction: from NNE at 5mph
- Cloud Cover: 50% (or partly cloudy)
- Pressure: 1004.1mb
- Current Weather: none



Right Now for Binghamton, NY

- Temperature: 19°F
- Dew Point: 11°F
- Wind Direction: from NW at 10mph
- Cloud Cover: 100% (or cloudy)
- Pressure: 1006.1mb
- Current Weather: snow

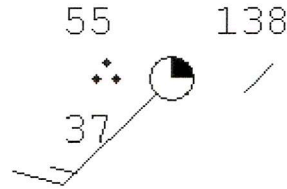


Key

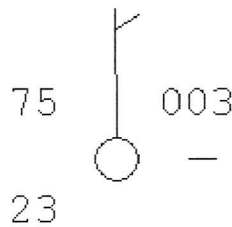
Weather Station Model Practice

Write the information for each station model. For the pressure, remember to add the decimal point between the 2nd & 3rd digit, then put a 9 or 10 in front of it. The acceptable range of pressures is 960mb to 1040mb. The first is an example.

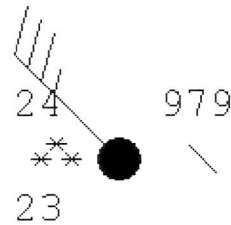
Temperature: 55°F
Dew Point: 37°F
Wind Direction: from the SW
Wind Speed: 15mph
Cloud Cover: 25% (or scattered)
Pressure: 1013.8mb
Current Weather: strong rain [more dots means more rain]



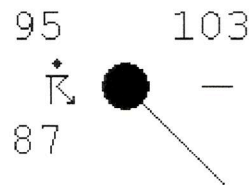
Temperature: 75
Dew Point: 23
Wind Direction: North
Wind Speed: 5
Cloud Cover: 0% or clear
Pressure: 1000.3 mb
Current Weather: None



Temperature: 24
Dew Point: 23
Wind Direction: NW
Wind Speed: 35
Cloud Cover: 100% or overcast
Pressure: 997.9 mb
Current Weather: heavy snow



Temperature: 95
Dew Point: 87
Wind Direction: SE
Wind Speed: 45
Cloud Cover: 100% or overcast
Pressure: 1010.3 mb
Current Weather: Thunderstorms with rain



Temperature: 63
Dew Point: 62
Wind Direction: None
Wind Speed: None
Cloud Cover: 100% or overcast
Pressure: 1007.8 mb
Current Weather: heavy fog

