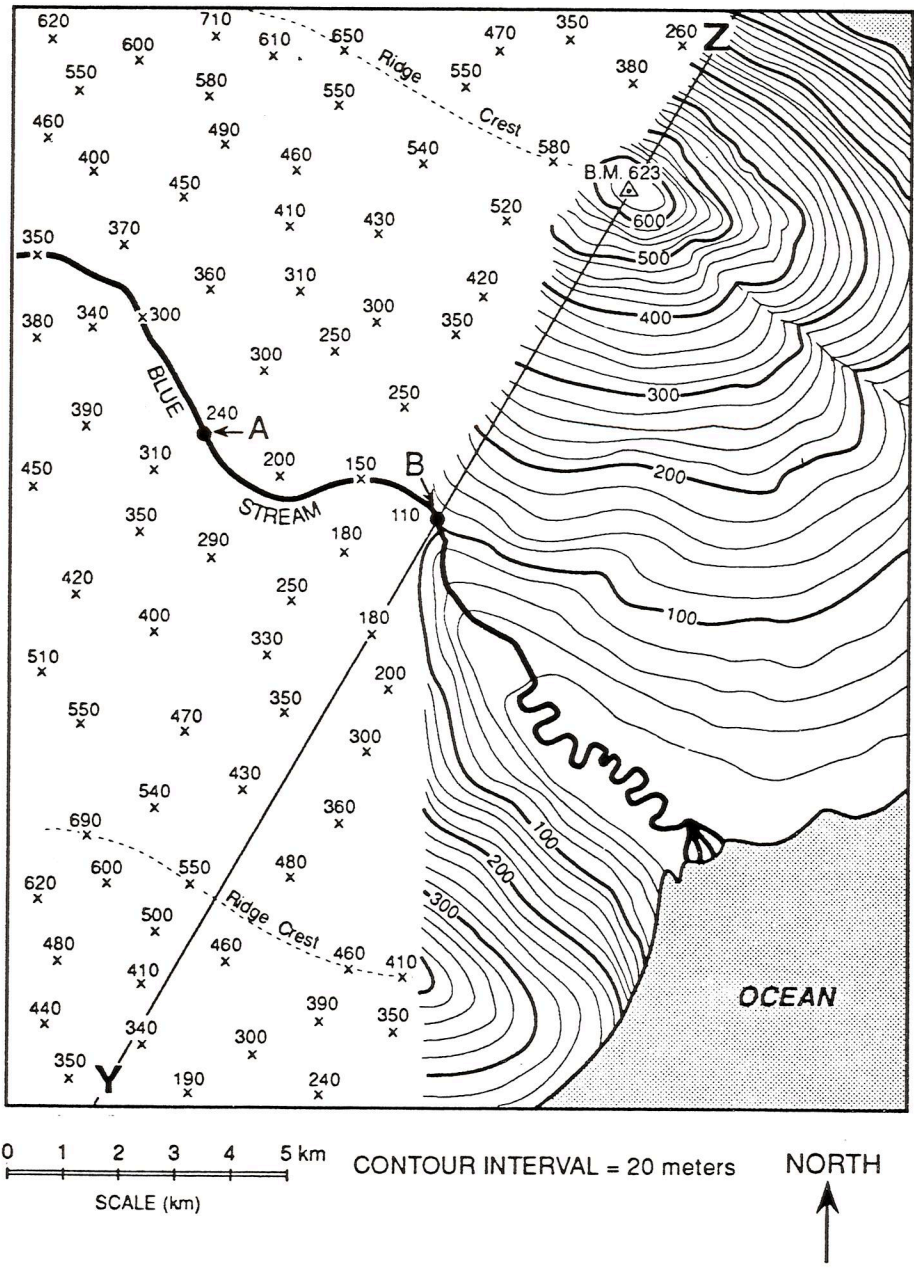


Name _____ Date _____ Period _____

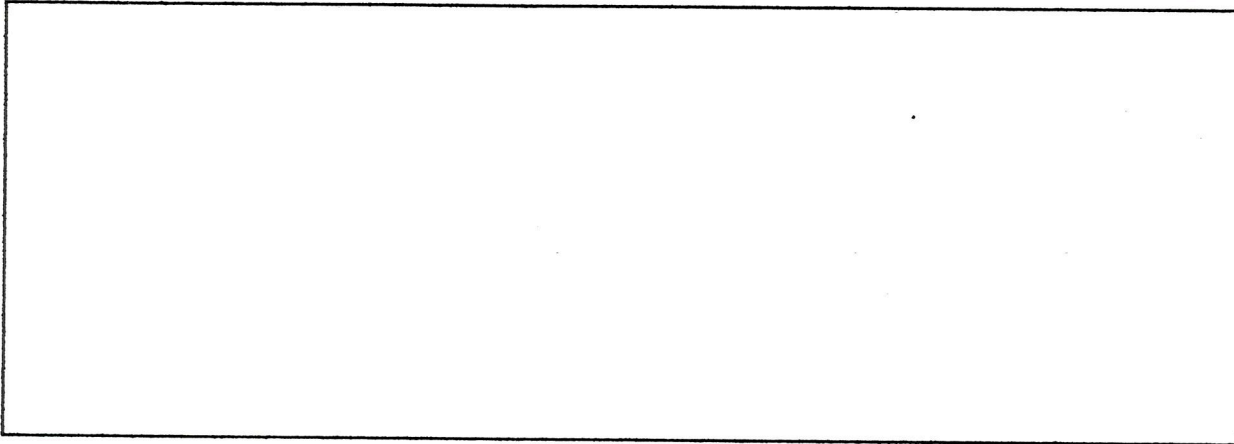
Free Response Homework: Blue Stream

Base your answers to questions 1 through 3 on the *Earth Science Reference Tables*, the contour map below, and your knowledge of Earth Science. Points A, B, Y, and Z are reference points on the map. Note that portion of the map is incomplete.



1. Using the diagram on the previous page complete the contour lines on the topographic using an interval of 100 meters and beginning with the 200 meter contour line. (Use pencil)

2. Determine the gradient between point A and point B.
- a) write the equation for gradient
 - b) substitute data into the equation using the correct units
 - c) solve for gradient and label with the correct units



3. Draw an accurate profile between point X and point Y. (Use an interval of 100) *dark index lines.*

