

Name Key Period _____ Score _____

2014 - 2015 Earth Science Mid Term Exam

Multiple Choice: Questions 1 through 25

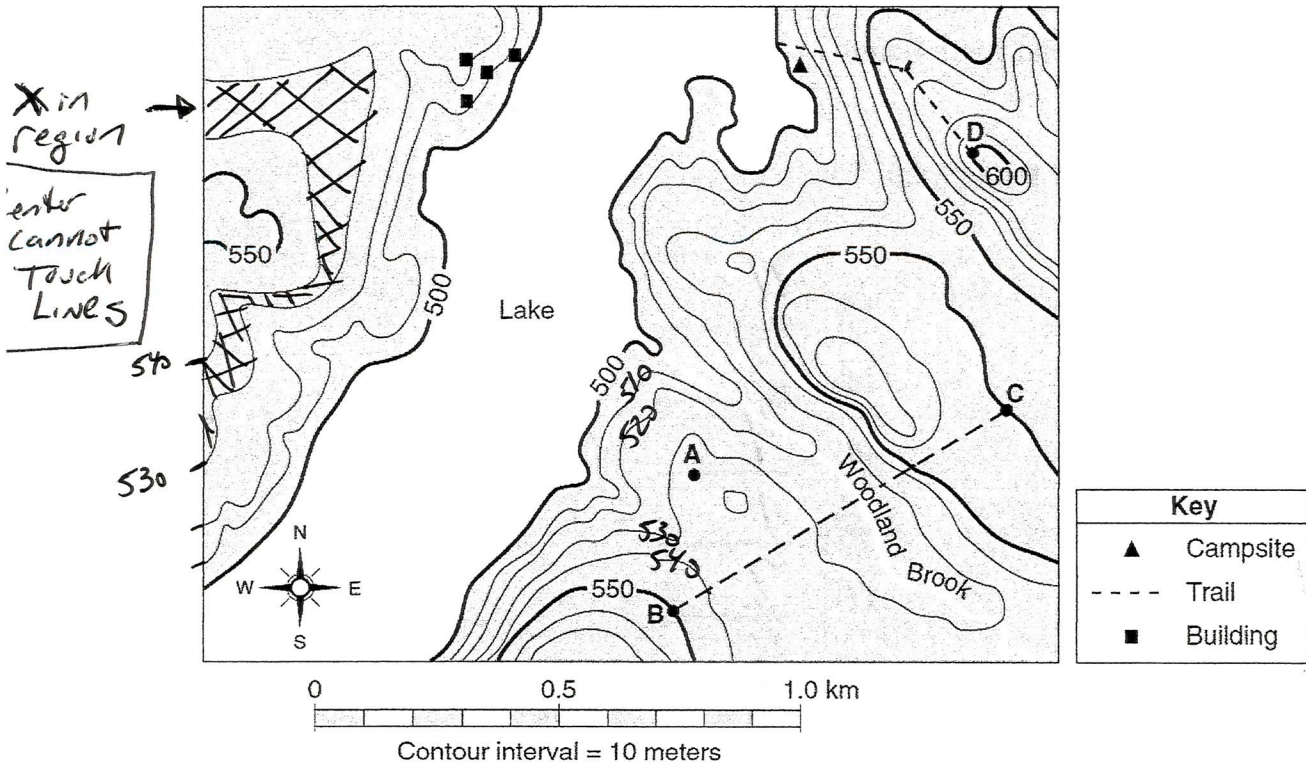
- 1) 2
- 2) 3
- 3) 1
- 4) 2
- 5) 4
- 6) 4
- 7) 3
- 8) 1
- 9) 3
- 10) 4
- 11) 3
- 12) 4

- 13) 4
- 14) 3
- 15) 4
- 16) 1
- 17) 2
- 18) 4
- 19) 3
- 20) 2
- 21) 4
- 22) 3
- 23) 1
- 24) 3
- 25) 2

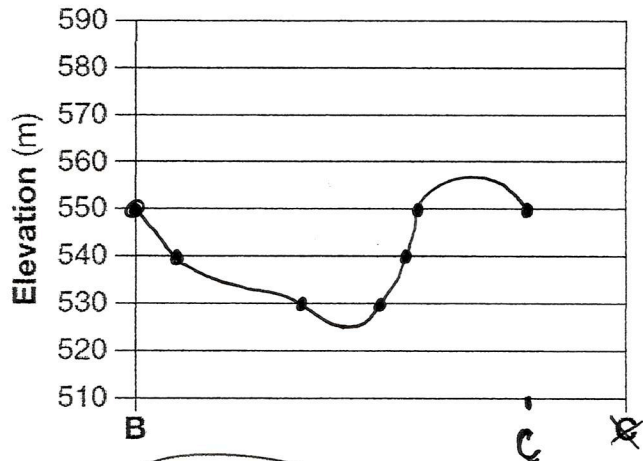
Free Response: Questions 26 through 45

ON BACK

26)



27)



• Lines curve SE where they cross the Brook.

• The Law of V's

• Rivers flow from Higher to Lower elevation

28) Circle one:

into the lake

out of the lake

Contour-line evidence:

- Contour lines bend upstream when crossing Woodland Brook.

- Stream flow is opposite the direction that the contour lines bend and

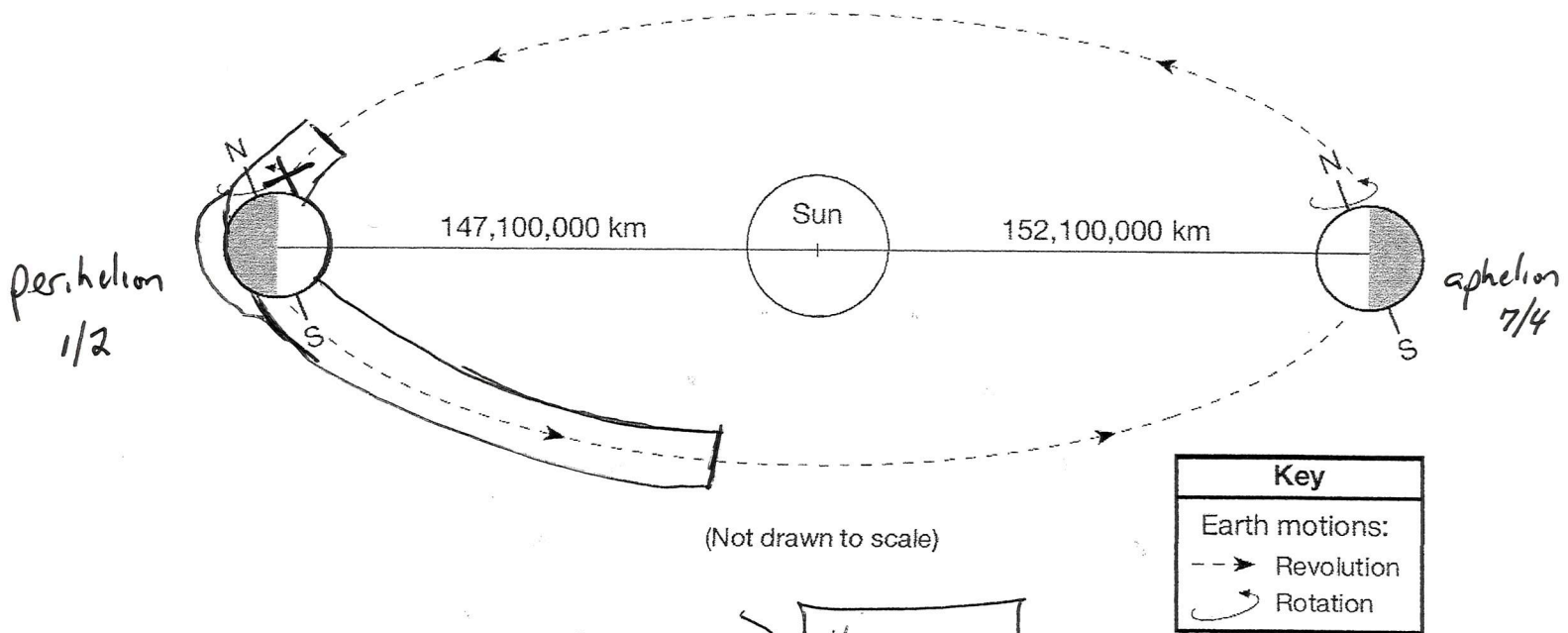
29) 200 m/km

the lines bend away from the Lake.

(185 to 215)

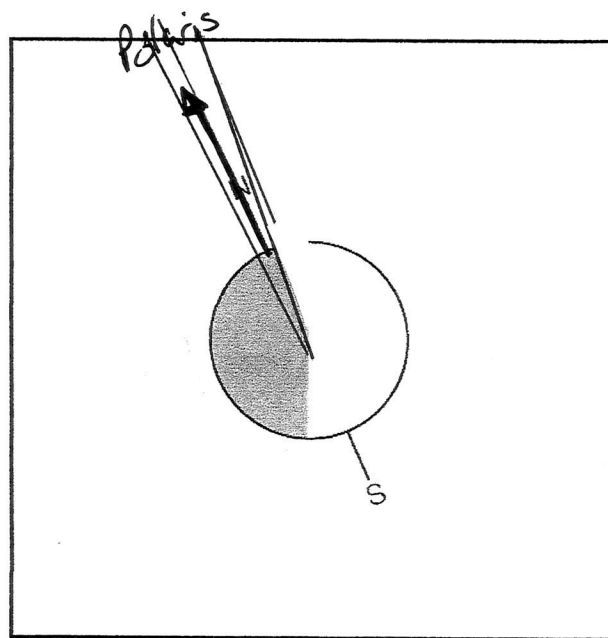
$$g = \frac{\Delta \text{elevation}}{\text{distance}} = \frac{100 \text{ m}}{.5 \text{ km}}$$

30)

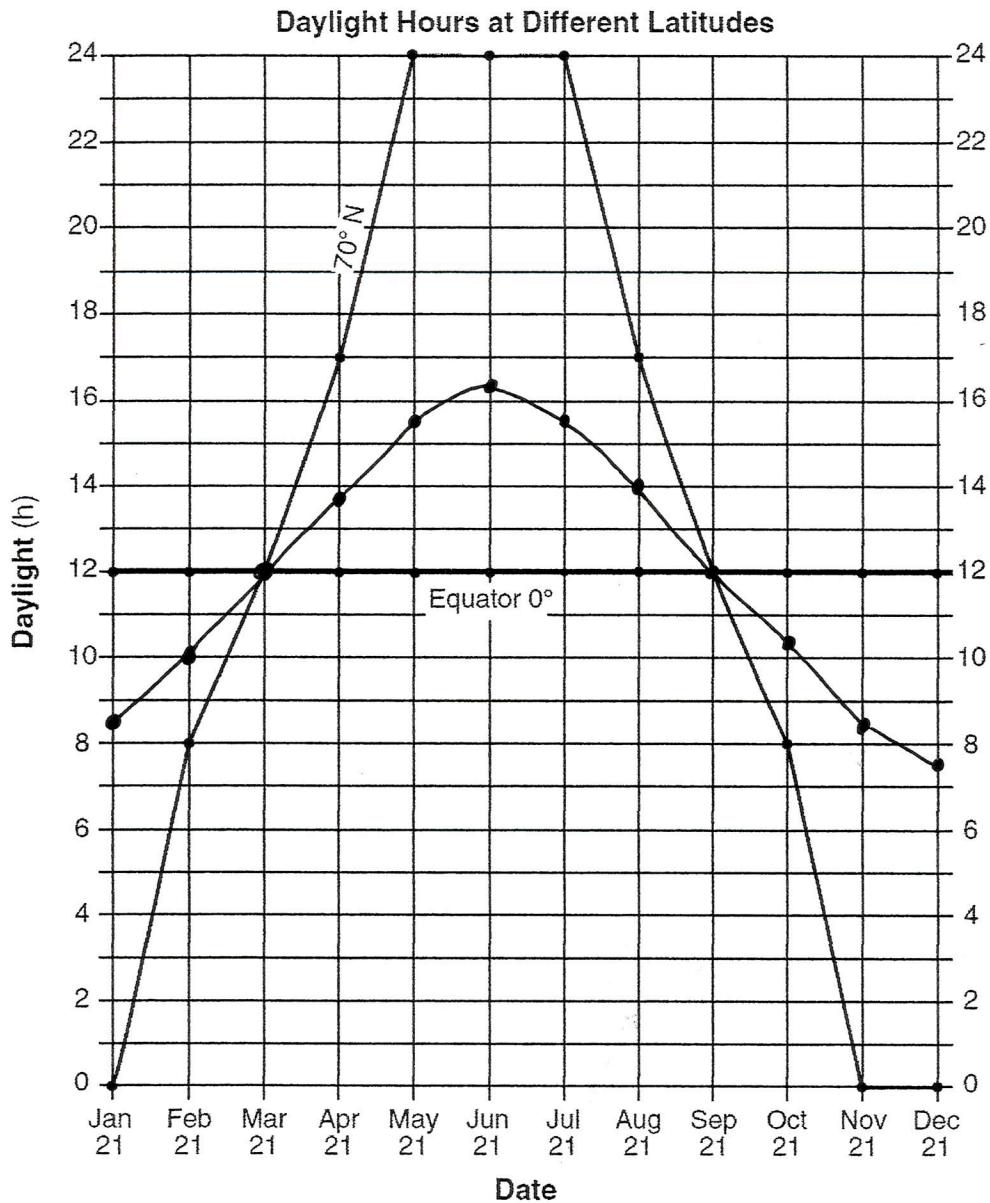


31) 23.5°. (23.4° to 23.5°) 1/2 is OK

32)



33)



34) 3/21 and 9/21 are Equinoxes / Vertical Ray is hitting the Equator.
Earth's Tilt is not towards or away from the Sun.

35) 0 h

- Sunrise is due East and sets due West at all latitudes.
- First day of Spring and fall.

36) Color: Dark (Black)

Texture: Rough (bumpy, jagged
uneven, coarse)

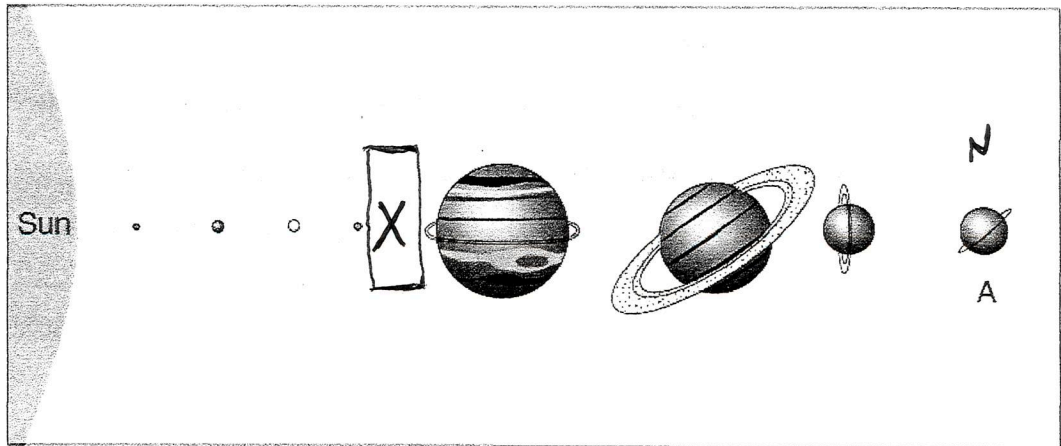
37) .5 C/h

38) (1) Carbon Dioxide

(2) Methane

Water Vapor
CFC's
Nitrous Oxide / N_2O
Ozone / O_3

39)



(Not drawn to scale)

40) 16 h or 16 hours. or hrs

41) 4,100 million years ago \rightarrow or 4.6 billion yrs.

42) 115 to 115.003305 times larger (no unit)

$$\frac{1,392,000 \text{ km}}{12,104 \text{ km}}$$

43) Nuclear Fusion (Fusion
H to He)

44) The ocean temperature is warm. (Above 82°F), mT air mass,
Low Air Pressure, Rising Air Currents, Low wind shear.

45) Action 1: - Create a Hurricane plan. / Practice (etc.)

Action 2: Assemble a Disaster Kit / (Stock up on Supplies.) Food/Water.

- update insurance
- obtain materials to secure home. (sandbags, plywood, etc.)
- learn about hurricane risks for Area.
- learn evacuation routes / shelter locations

No Credit for Action That implies an imminent Hurricane