

Name Key

Date 3/9/10

Period _____

Midterm 2010 (topics 1 - 7)

Multiple choice (2.5 points each) Free Response - 2 pts each

1) 2

16) 4

27 Stratosphere

2) 1

17) 1

3) 2

18) 3

28

4) 4

19) 2

5) 3

20) 2

6) 3

21) 4

7) 4

22) 4

8) 4

23) 3

9) 2

24) 3

10) 3

25) 1

11) 3

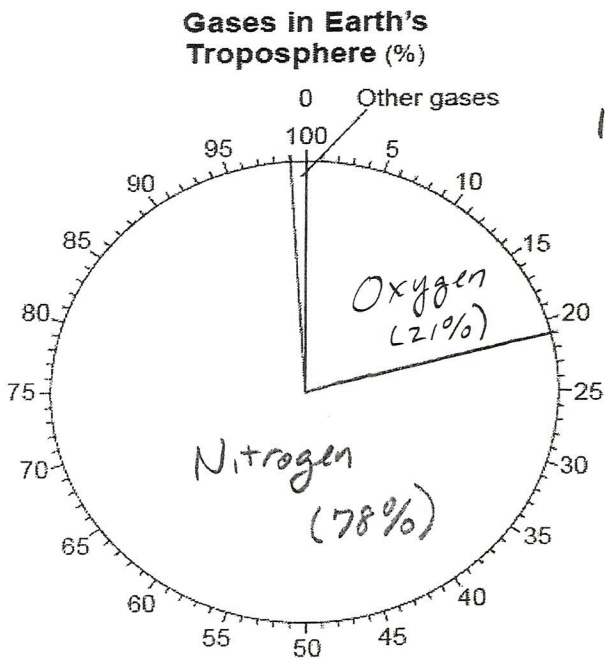
26) 1

12) 1

13) 1

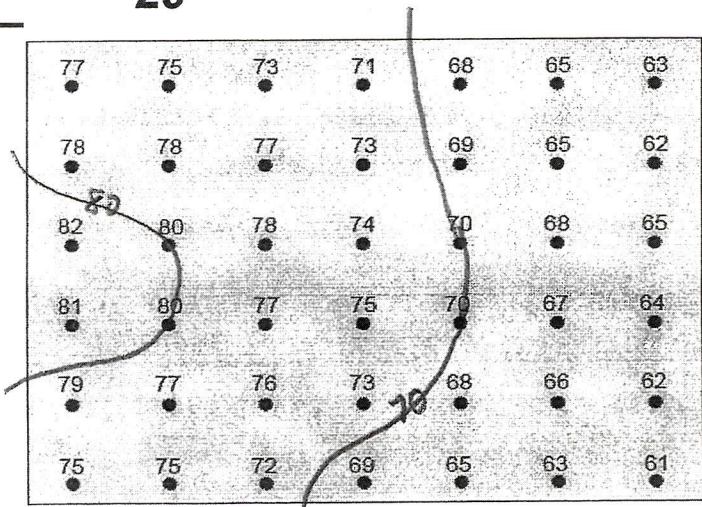
14) 4

15) 2



1pt each
*need labels

29



1pt each

30 Sun is higher in the sky, more direct angle of insolation

31 different position in our orbit around the Sun causes the angle to be different

32 Infrared

33 Allows visible light to pass through and prevents Infrared from escaping

34 Volcanic ash blocks incoming solar radiation or sunlight or insolation

35 Inverse, as mass increases, length of time necessary decreases

36 decreases

37 gravity or gravitational attraction

38 Highest air-pressure station: A



D

B

Lowest air-pressure station: C

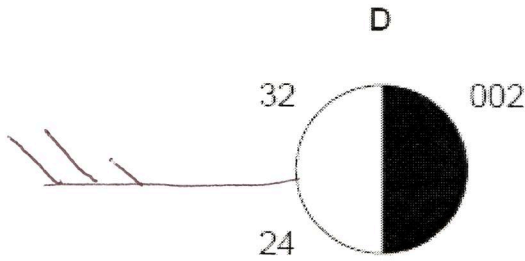
39 28 °C

40

100% cloud cover

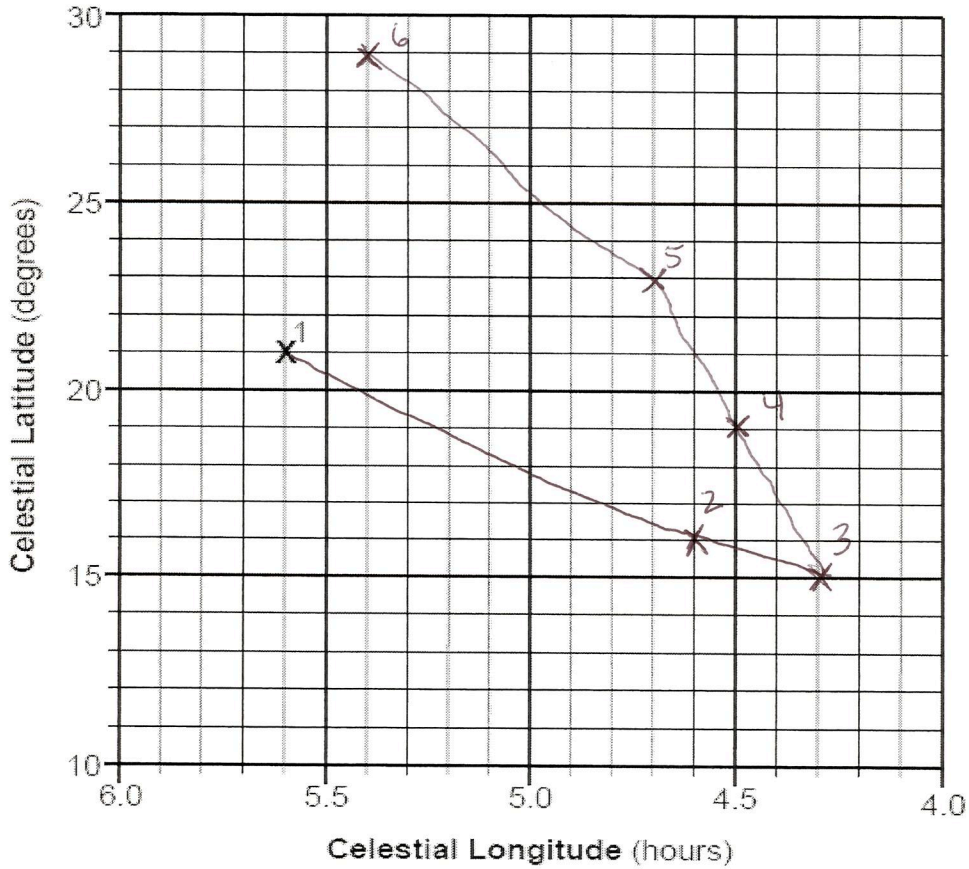
Air temp & dewpoint temp closest together

41



42

Location of Six Stars in Taurus



43

Stars	Temperature (K)	Luminosity (relative to the Sun)	Classification
Aldebaran	4000	300	giant
Elnath	13,700	700	Main Sequence